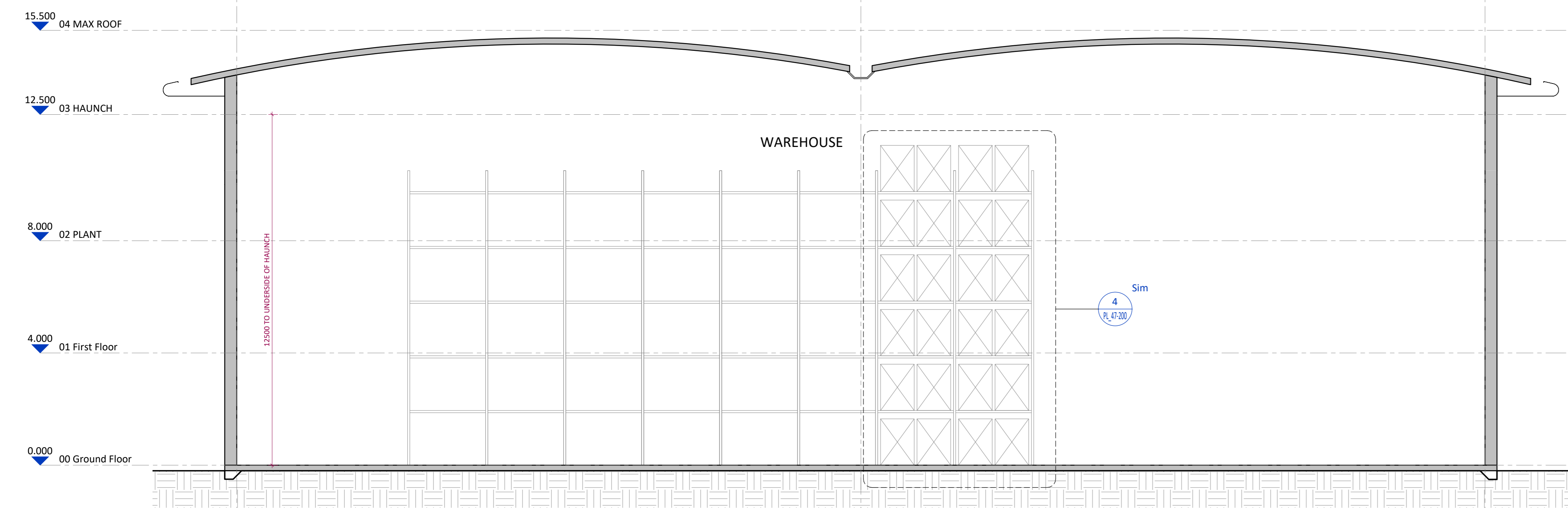
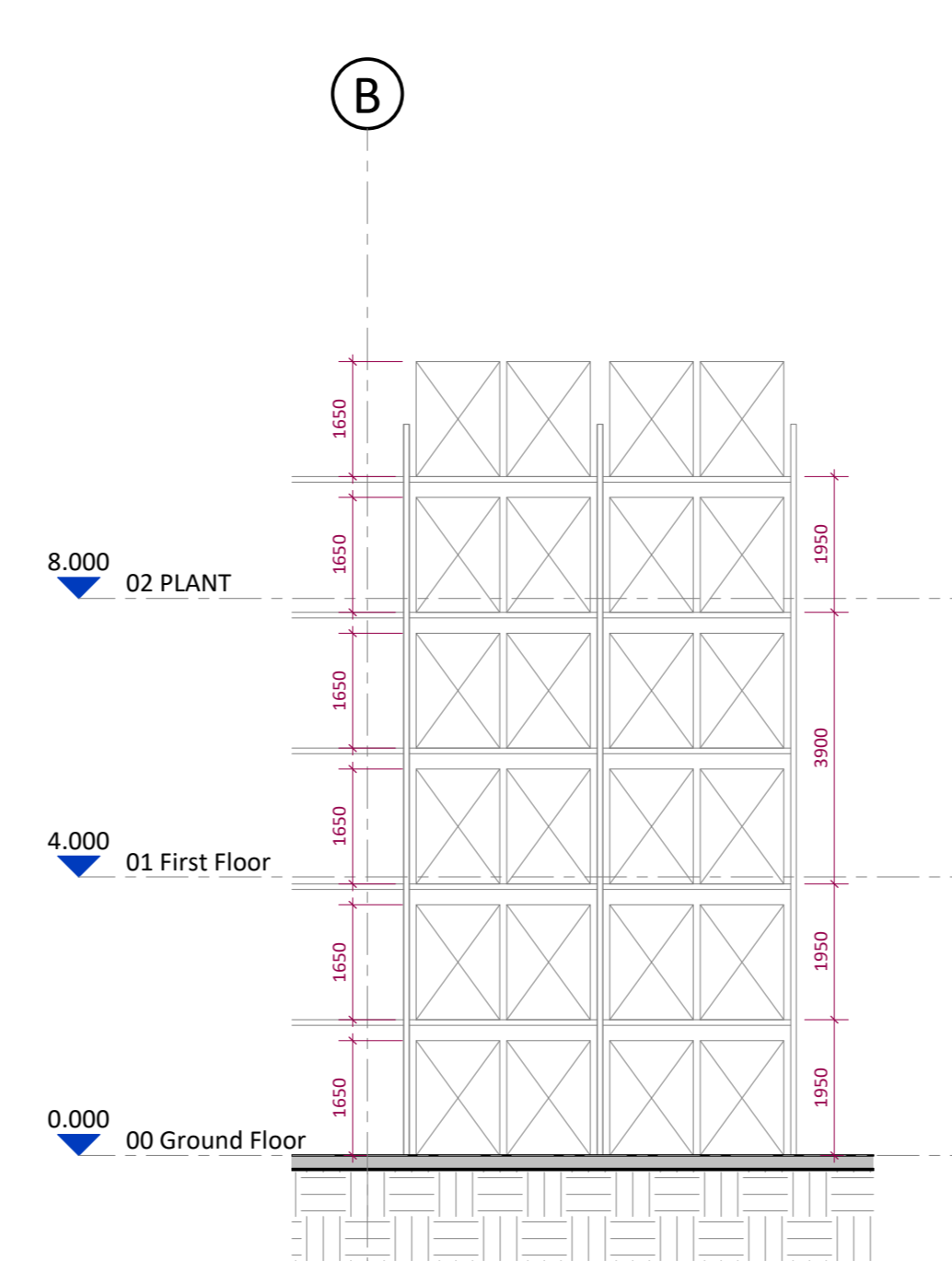


1 GROUND FLOOR PLAN
1 : 100

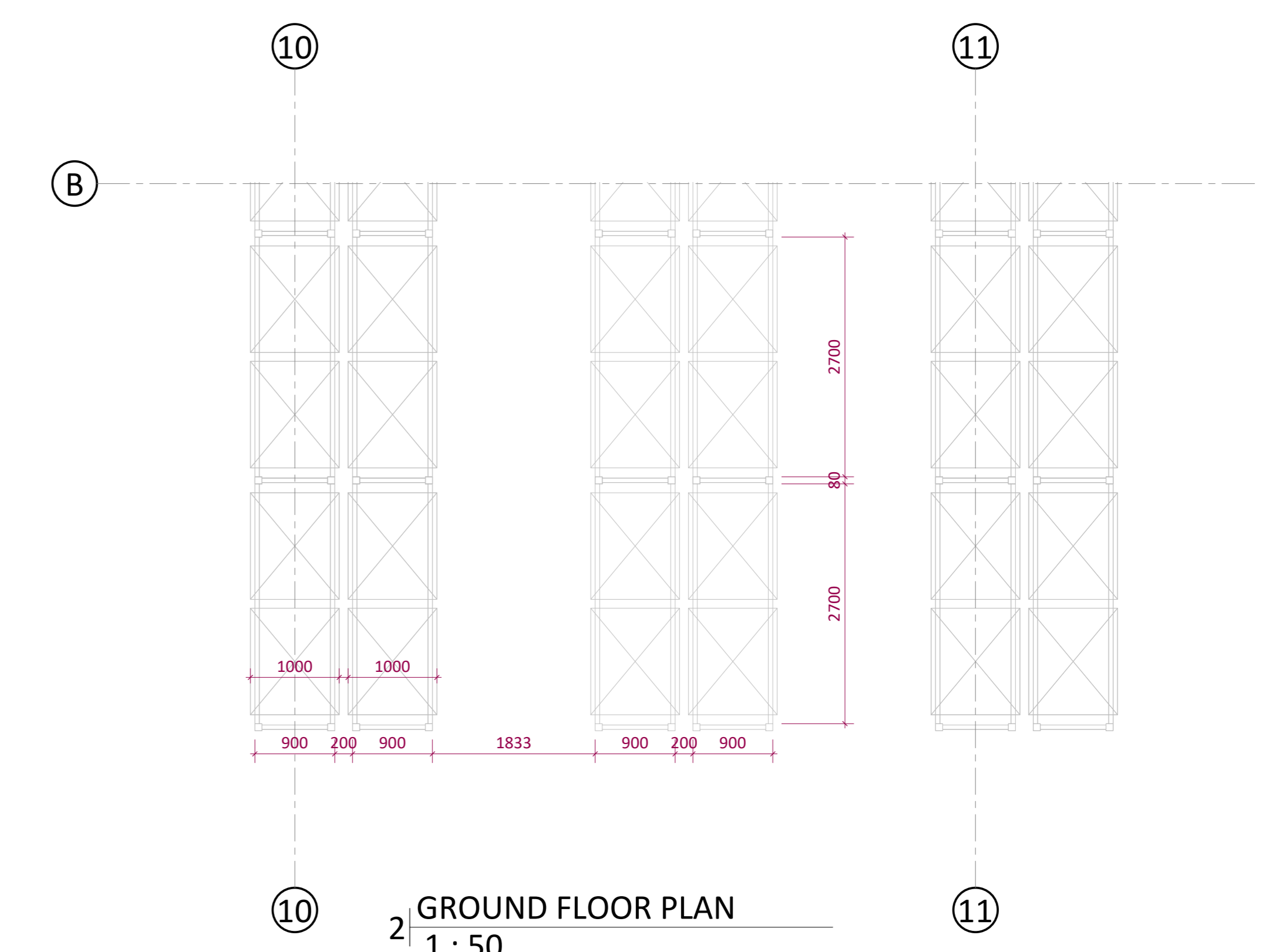
Standard 1200mm wide x 1000mm deep pallets.
 Pallet height unknown, therefore calculation base upon 1650mm high pallets.
 VNA applications x 2000mm to rack aisles
Capacity shown:
 318 bays of racking
 12 pallets per bay
Total pallets = 3,816



3 TYPICAL SECTION
1 : 100



4 DETAIL ELEVATION
1 : 100



2 GROUND FLOOR PLAN
1 : 50